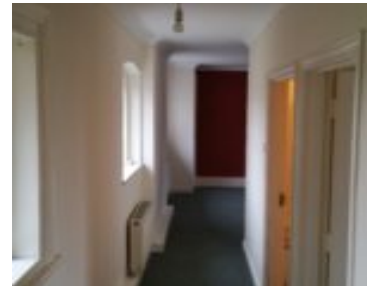


FLAT 9, 22 WESTFIELD AVENUE, HAYLING ISLAND

<https://palaceauctions.com>

flat 9, 22 Westfield Ave, Hayling Island PO119AB



Flat 9, 22 Westfield Avenue, Hayling Island, is a prime Hayling Island flat investment opportunity. With a secure tenant in place at £700/month and a future rental value of up to £1,100/month, this leasehold property offers immediate income, strong yield potential, and a sought-after coastal location. Entered into the Palace Auctions 24 June property auction, [...]

- 2 beds
- 1 bath
- apartment, flat
- apartment, Flats for Sale in Brighton
- for sale by auction



Category

Apartments: yes

Off market property: no

House: no

Investment property: yes

Commercial property: no

Other Real estate: yes

Value add opportunity: yes

Land: no

Land with Development: no

HMO investment: no

Hotels and apartment hotels: no

Mixed commercial and Resi: no

Below Market value: yes

Description

Refer to Terms & Conditions: Array

Amenities & Features

Features: Growth Potential: Strong opportunity for rental uplift with a future projected rental value of up to £1100 per month, Immediate Income: Currently tenanted generating a steady rental income of £700 per month, Location Situated in the heart of South Hayling at 22 Westfield Avenue just moments from the seafront and local amenities in Mengham, Tenure Details: Offered as a leasehold property with approximately 101 years remaining on a 125-year lease that commenced in 2002

