

Land Opportunity Thailand , Phuket

KAMALA BEACH



Turn key Solution Option

Located in the Golden Mile



**Time to
relax!**



CONTENT

A burgeoning economy and soaring tourist numbers make Phuket an appealing destination for investment. Buyers are drawn in by the prospect of a safe and stable market, alongside a consistent, year-round demand for short-stay rental accommodation

THAILAND, PHUKET

PHUKET

MILLIONAIRE'S MILE

VARIETY OF OPPORTUNITY

WHY INVEST IN PHUKET PROPERTY

THE LIFESTYLE IN PHUKET

SAFETY IN PHUKET

WHAT MAKES PHUKET SPECIAL

KEY FEATURES

TURN KEY SOLUTION OPTION

SITE PHOTOS

LOCATION PRT-1

LOCATION PRT-2

INVESTMENT EXAMPLE - 1

INVESTMENT EXAMPLE - 2

INVESTMENT EXAMPLE - 3



Demie Charles

Thailand, Phuket

Thailand boasts some of the world's most breathtaking coastlines and islands, drawing travellers with promises of pristine white beaches, crystalline waters, and a rich marine tapestry. It's no wonder Thailand stands as one of the globe's prime destinations for expatriates seeking a high quality of life at a fraction of the cost. Year-round tropical climates coupled with modern amenities, including top-notch yet affordable healthcare, make it an attractive prospect for many.

Once dubbed the Pearl of the Andaman Sea,

Phuket lies in the Andaman Sea on Thailand's Indian Ocean coast located 867 kilometers south of Bangkok. Phuket is blessed with magnificent coves and bays, palm-filled, white beaches, small surrounding islands, hospitable people and great seafood.



Demie Charles

Phuket

Phuket's allure has transformed significantly over the years. What was once a secluded haven cherished by backpackers has evolved into a magnet for luxury seekers. The island's evolution began with the advent of international flights in 1984, followed closely by the inauguration of the iconic Amanpuri resort in 1987, marking the dawn of a new era.

Today, Phuket epitomizes five-star luxury on a grand scale, beckoning discerning globetrotters from every corner of the planet. The island's allure extends beyond just leisure travellers, attracting long-term expatriates in search of a sun-soaked sanctuary with access to international-standard education and healthcare facilities. For those seeking the pinnacle of opulence, the journey often leads to Millionaire's Mile.



Demie Charles

Millionaire's Mile

Meandering along Phuket's western shoreline, Millionaire's Mile carves its way through the Kamala Headland, nestled between Kamala Beach in the north and Patong in the south. Spanning a few scenic kilometres, the drive offers breathtaking vistas, culminating in a roughly 20-minute journey from end to end.

Legend has it that this stretch was home to the island's inaugural million-dollar villa, and its allure remains undiminished. The panoramic views are simply awe-inspiring, leaving visitors speechless as they soak in the breathtaking sunsets and endless ocean horizons from the lofty clifftop vantage points.

But what about the residences themselves? Discreetly tucked away amidst the lush rainforest, these exclusive villas are nearly invisible from the road. Yet, for those who venture closer, they reveal themselves as the epitome of luxury and exclusivity, embodying the essence of Millionaire's Mile.



Demie Charles

Variety of opportunity

Buying a property in Phuket can be a fantastic idea for those who are looking for a long-term investment and a place to call home in a tropical paradise. Phuket offers a diverse range of properties, from beachfront villas to cozy condos, making it suitable for various lifestyles and preferences. Phuket also has a well-developed transportation system, making it easier to reach other destinations from there. With a variety of Activities, from vibrant nightlife to cultural experiences.



Demie Charles

Why Invest in Phuket Property

Investing in Phuket property presents a unique opportunity for both personal enjoyment and financial gain. Known as the "Pearl of the Andaman," Phuket offers a thriving real estate market characterized by stunning natural beauty, robust tourism, and attractive investment potential.

Booming Tourism Industry: Phuket's status as one of the world's premier tourist destinations ensures a steady influx of visitors year-round. This high demand for accommodation, coupled with limited available land for development, creates a lucrative environment for property investors.

Strong Rental Yields: Rental properties in Phuket enjoy high occupancy rates, providing investors with reliable rental income streams. Whether it's beachfront villas, luxury condominiums, or boutique resorts, Phuket's diverse property market caters to various investment preferences.

Capital Appreciation: Over the years, Phuket has witnessed significant capital appreciation in its real estate market. With ongoing infrastructure developments, improved accessibility, and growing international interest, property values continue to rise, offering substantial returns on investment.

Favorable Investment Climate: Thailand's pro-investment policies, foreign ownership options, and stable economic environment make Phuket an attractive destination for property investment. Additionally, the Thai government's initiatives to promote tourism and foreign investment further enhance the appeal of Phuket's real estate market.



Demie Charles

The Lifestyle in Phuket Living in Phuket offers a harmonious blend of tropical paradise and modern convenience. Residents and expatriates alike enjoy a laid-back lifestyle surrounded by breathtaking landscapes, vibrant culture, and a wealth of recreational activities.

Tropical Paradise: Picture-perfect beaches, crystal-clear waters, and lush rainforests define Phuket's natural beauty. Residents have easy access to world-class diving spots, water sports, and pristine beaches, allowing for a lifestyle centered around relaxation and outdoor adventures.

Cultural Richness: Phuket's cultural heritage is reflected in its colorful festivals, traditional cuisine, and vibrant street markets. Residents have the opportunity to immerse themselves in Thai customs and traditions, fostering a sense of community and belonging.

Modern Amenities: Despite its idyllic setting, Phuket offers modern amenities and infrastructure, including international schools, healthcare facilities, shopping malls, and entertainment venues. Whether it's indulging in fine dining experiences or unwinding at luxury spas, residents enjoy a high standard of living in Phuket.

Safety in Phuket Phuket is renowned for its safety and security, making it an ideal destination for living and investing.

Low Crime Rate: Phuket boasts a low crime rate compared to many other tourist destinations. The local authorities prioritize the safety of residents and visitors, ensuring a peaceful and secure environment.

Tourist-Friendly Environment: As a premier tourist destination, Phuket places a strong emphasis on hospitality and safety. Tourist areas are well-patrolled, and emergency services are readily available, providing peace of mind to residents and visitors alike.

Community Spirit: Phuket's tight-knit communities foster a sense of solidarity and mutual support. Residents often look out for one another, contributing to the overall safety and well-being of the island.



Remie Charles

What Makes Phuket Special

Phuket's allure extends far beyond its stunning landscapes and thriving real estate market. Here are a few aspects that make Phuket truly special:

Cultural Diversity: Phuket's rich cultural tapestry is shaped by its diverse population, including Thai locals, expatriates, and international visitors. This cultural melting pot adds depth and flavor to the island's identity, creating a vibrant and inclusive community.

Gateway to Adventure: From exploring hidden waterfalls and jungle treks to island-hopping excursions and snorkeling adventures, Phuket serves as a gateway to countless experiences. Whether you seek adrenaline-fueled thrills or serene moments of relaxation, Phuket offers something for everyone.

World-Class Hospitality: Renowned for its warm hospitality and friendly locals, Phuket welcomes visitors with open arms. Whether you're indulging in authentic Thai cuisine at a local eatery or receiving pampering spa treatments, the hospitality of Phuket leaves a lasting impression on all who visit.

Investing in Phuket property not only promises financial prosperity but also offers the opportunity to embrace a lifestyle characterized by natural beauty, cultural richness, and unparalleled experiences. Experience the magic of Phuket and unlock a world of possibilities in one of Southeast Asia's most coveted destinations.



Demie Charles

Key Features

Opportunity to purchase land and build:
3x luxurious spacious villas or
4x to 8x reasonable sized Condos/villas

Assistance with :

Lawyers/Solicitor

State Governor (amendments to planning)

Thai Freehold assistance/setup in Ownership via Thai Company -

Legal requirement in Thailand.

Land Title - Absolute deed - Red Garuda (*also attest that the land has been fully surveyed and correlated by the Land Department with the satellite photographs and the national survey grid*)

4046.86 Sqm2 Land -" 1 acre "(2.5 Rais Thai)

Sea View

Concrete Road Access, Electric and Water Supply in Place

24-Hour Security on Site

In an incredible booming real estate market, and favourable investment conditions for property buyers. Owning a piece of paradise in Phuket can be both a fulfilling lifestyle choice and a sound financial investment.



An additional option for a full turn key solution: Full construction, finish including landscaping and if required put to market for rental fully managed/serviced . example Rental Returns min 7% per year net of charges. Negotiable contract 5 + years

Demie Charles

Turn Key Solution Option



Negotiation on purchasing the land.
Legal Solicitors representatives at all times.

Construction as required by the investor with building regulations to the highest standards as their specifications. A long with building Maintenance and Landscaping. Assist in Changing any planning permission with local legislation services. - Land has been cleared ready for construction
Current planning permission is for 3 luxurious Villas- Open development project : meaning option to build on the land but not higher that the regulations allowed However local authorities have been made a wear and open to possible new submitted development ideas. ie a hotel - and assist with Classification, types, licence permits and all the Necessary Documents

Security via our staff and with the local police,
Provide or assisting in staff if required eg personnel chefs and chauffeur service anywhere in Thailand
Business services including personal assistants,
Visa services and executive services for the investor whilst staying in Thailand.

Register a Company for the investor . As required by Thai law for foreigners who want to buy land or property they will hold 49% of the company shares and Thai national has to have 51% .
we will provide nominee and have a separate contract with the nominee Thai national so as 100% belongs outright to the investor. We also provide solicitors for this.

For added convenience an option, we work with an international credited bank for safer faster and reliable transfers to assist with international investors.

We have an in-house team that covers and has a proven track record for successful completed projects we can also assist in other area if required.

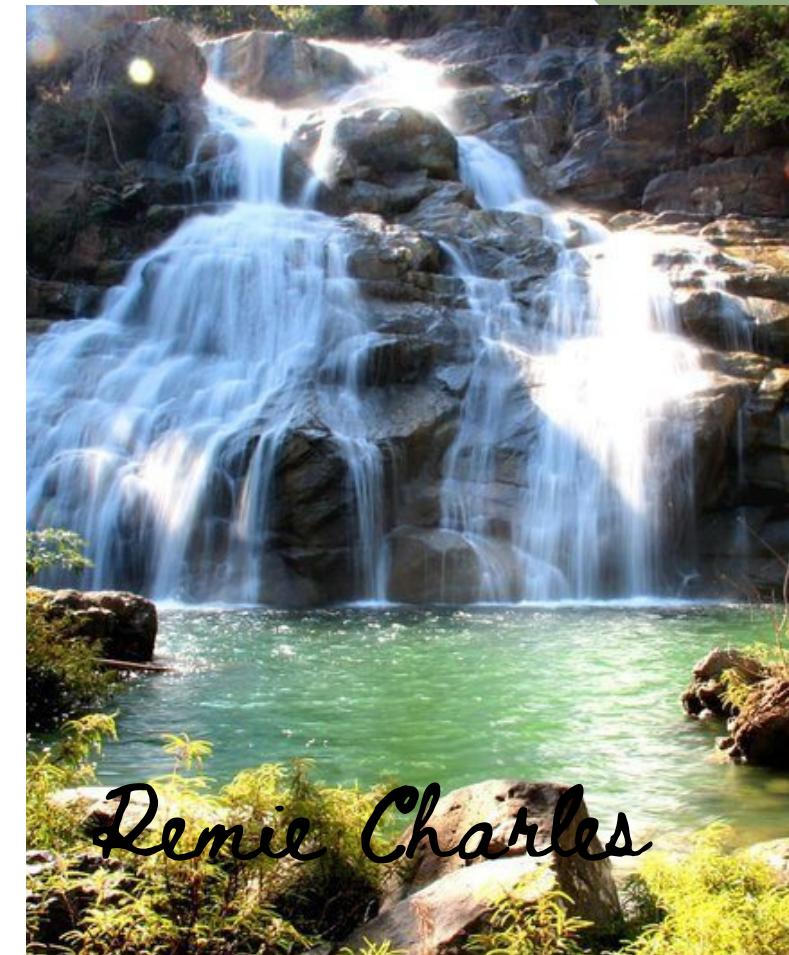
Demie Charles

Site Photos

Less than 100 meters from
the beach



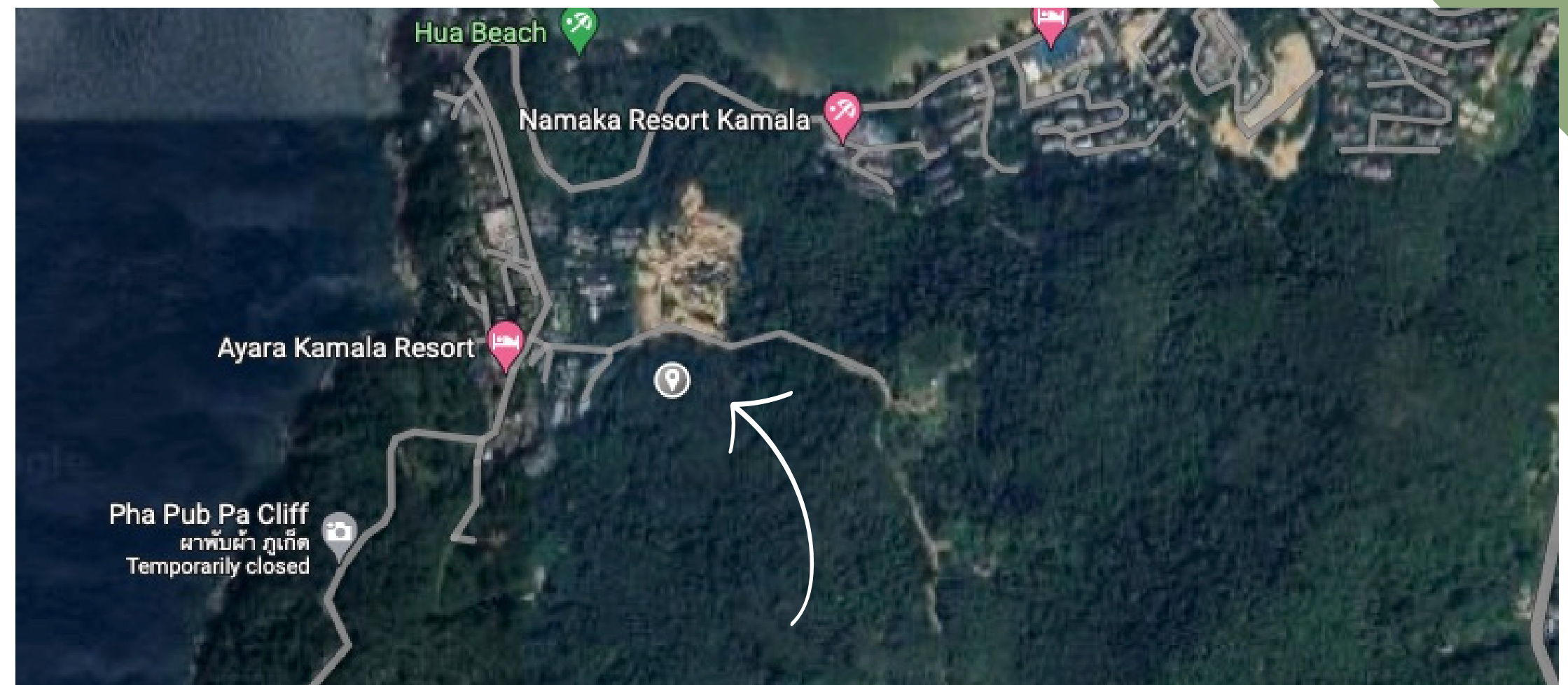
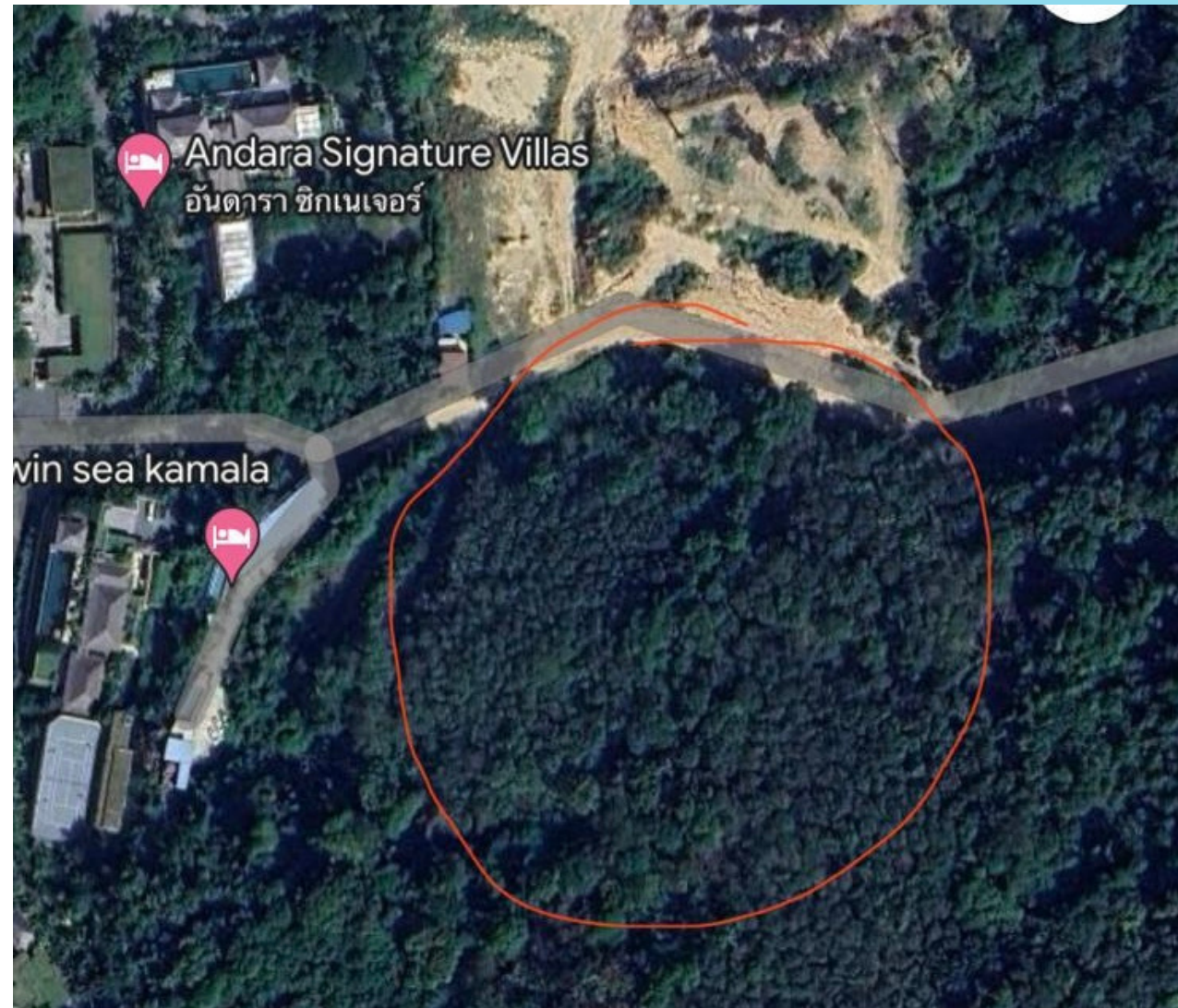
More photos available on request



Location prt-1

Coordinates

7.943006,
98.265778 appx

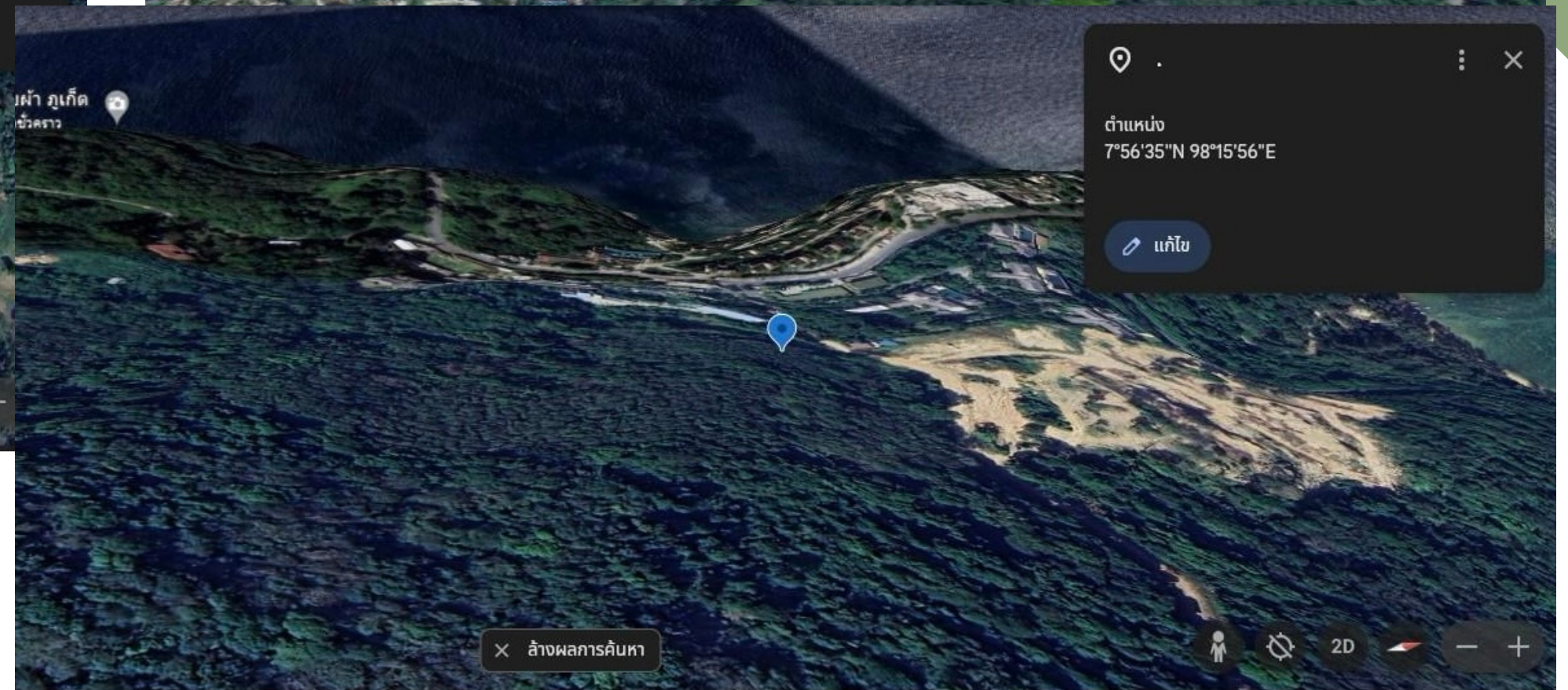
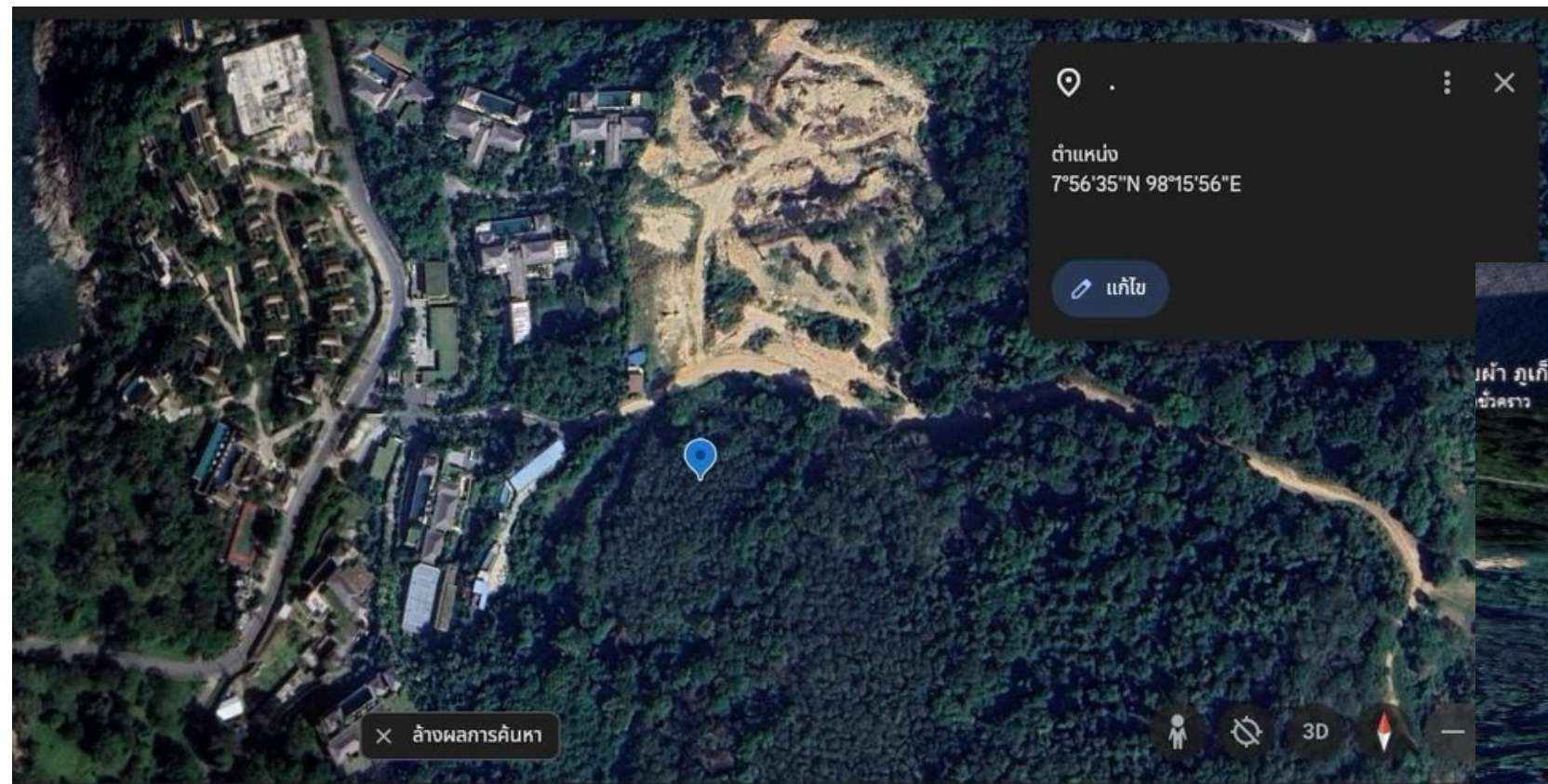


Demie Charles

Location prt-2

Coordinates

7°56'35"N 98°15'56"E appx

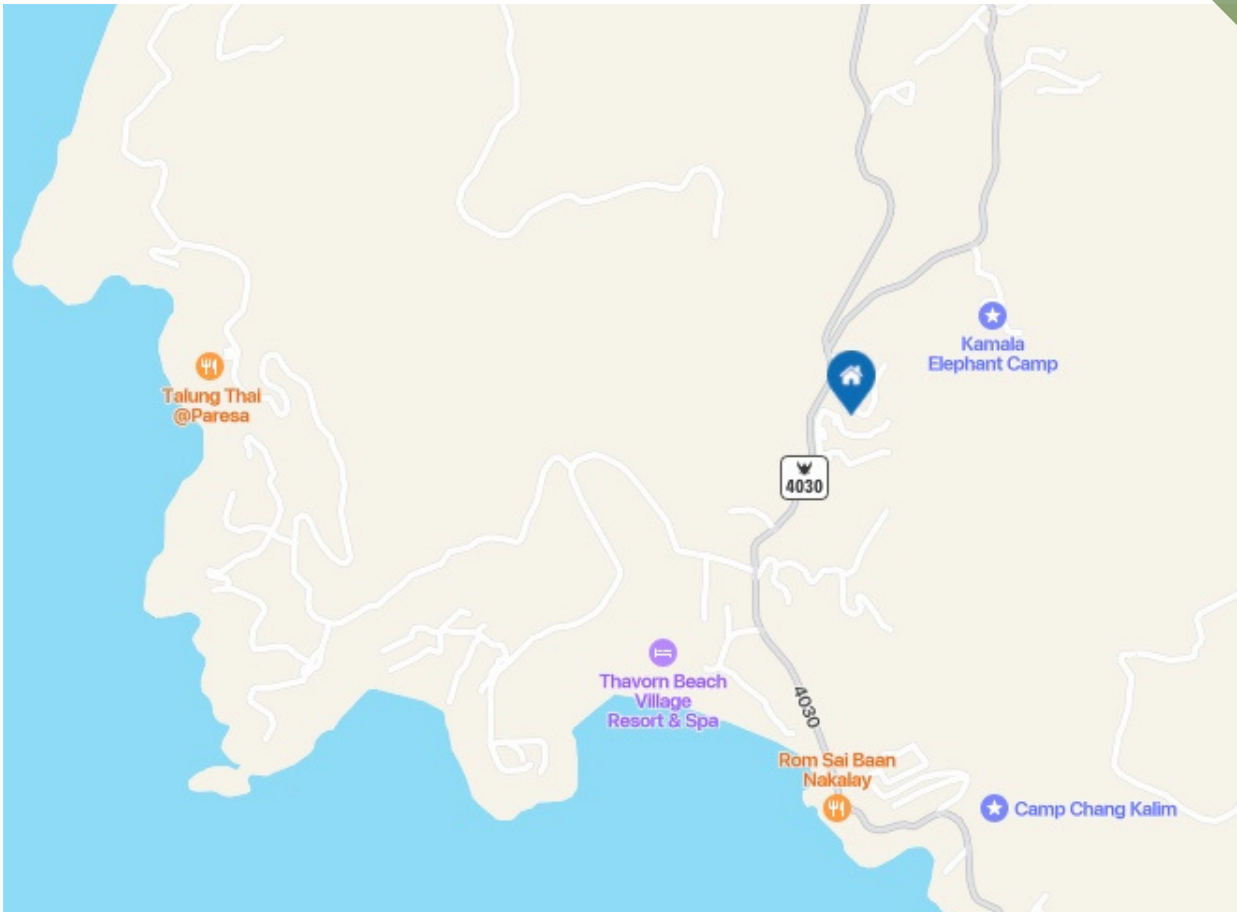


Demie Charles

Investment example - 1

This property is a 300 SqM villa with 4 bedrooms and 4 bathrooms that is available for rent. It is located in Kamala,

LOCATION	Phuket Kamala
VIEW	Sea View, Pool View, Garden View
INDOOR AREA	300.00 sqm2
TOTAL AREA	420.00 Sqm2
STOREYS	2
LAND SIZE	120.00 Sqm2
PRICE	GBP 3.960/Month
TYPE	Long term - min -6/12 Month



Property/
Imagine's taken
off
current market



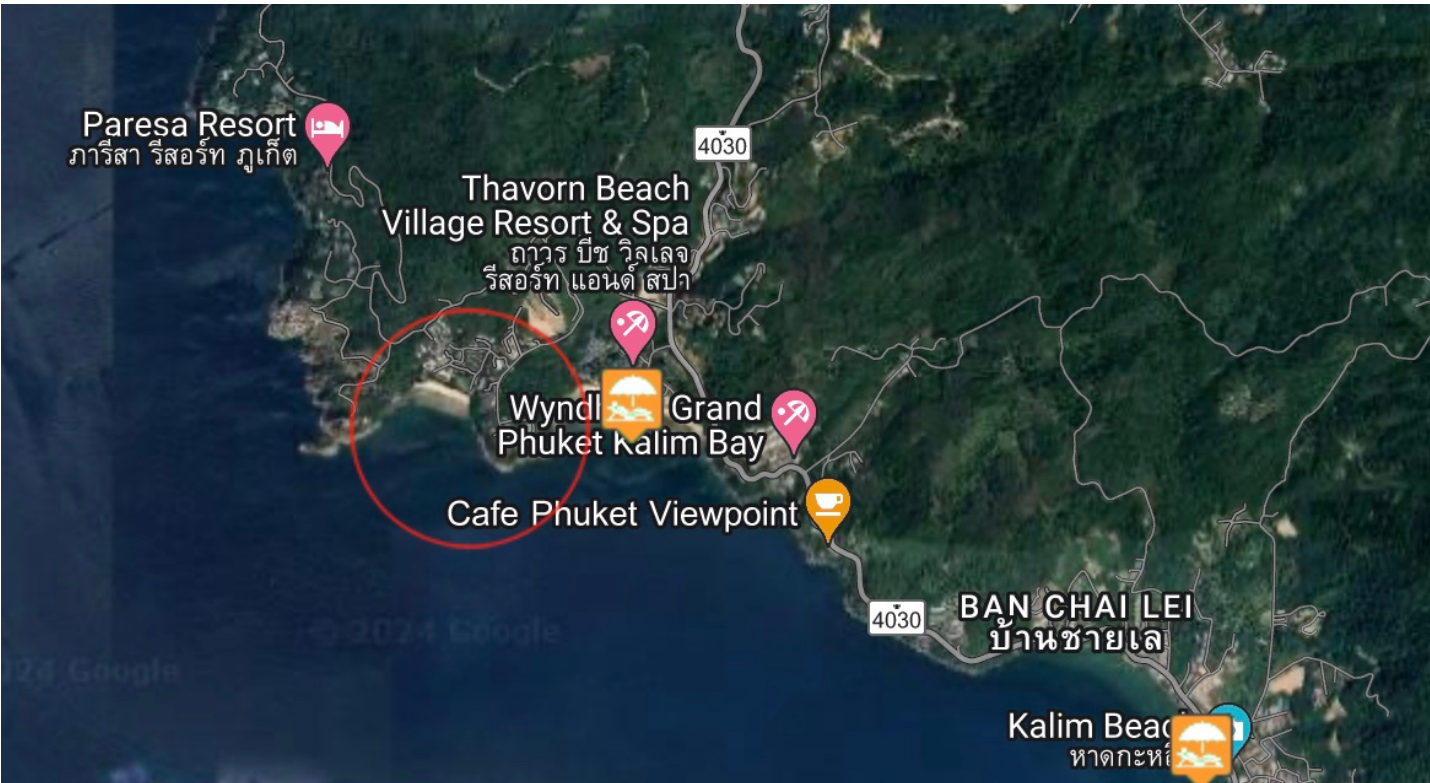
Demie Charles

Investment

example-2

This luxury villas feature a modern design with elegant contemporary furnishings. There is an open-plan living area and wide terrace that features a magnificent infinity pool as the centerpiece

LOCATION	Phuket Kamala
VIEW	Sea View / Mountain
TOTAL AREA	500.00 Sqm2
STOREYS	2
LAND SIZE	1000 Sqm2
PRICE	PRICE GBP 14.328 / Month
TYPE	Log term Rental



Property/
Imagine's taken
off
current market

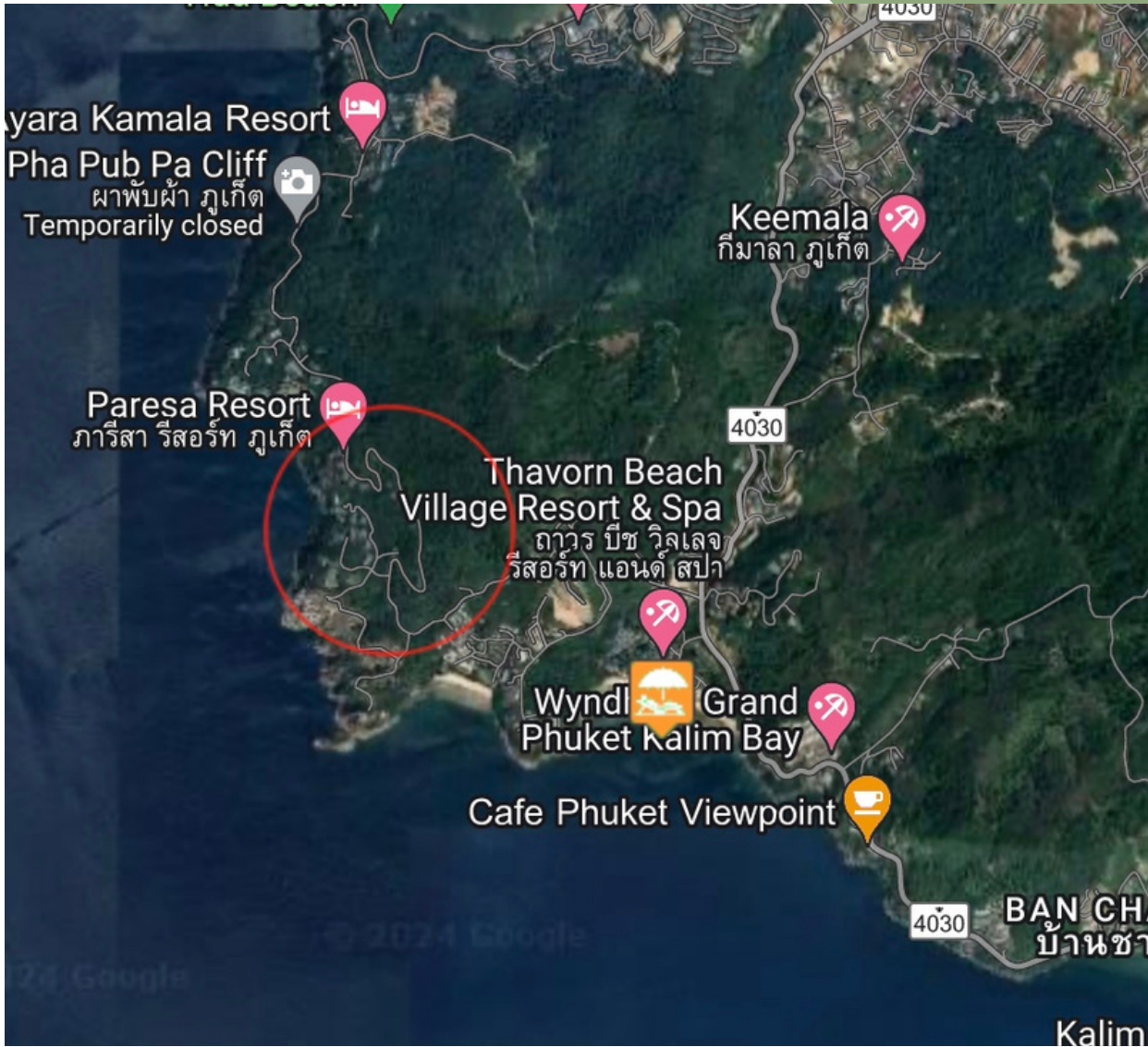


Investment example-3

Cape Amarin Estate | Incredible Sea Views from Newly Built Six Bedroom Villa with Infinity Pool in Kamala for Rent

LOCATION	Phuket Kamala
VIEW	Sea View
INDOOR AREA	1148.00 sqm2
TOTAL AREA	1298.00 Sqm2
STOREYS	3
LAND SIZE	2011.00 Sqm2 (1.26 Rai)
PRICE	GBP 20,940/Month
TYPE	Long term - min -6 Month

This villa is the perfect blend of luxury, comfort and privacy. Incredible ocean views can be seen from all aspects of this beautifully laid out home

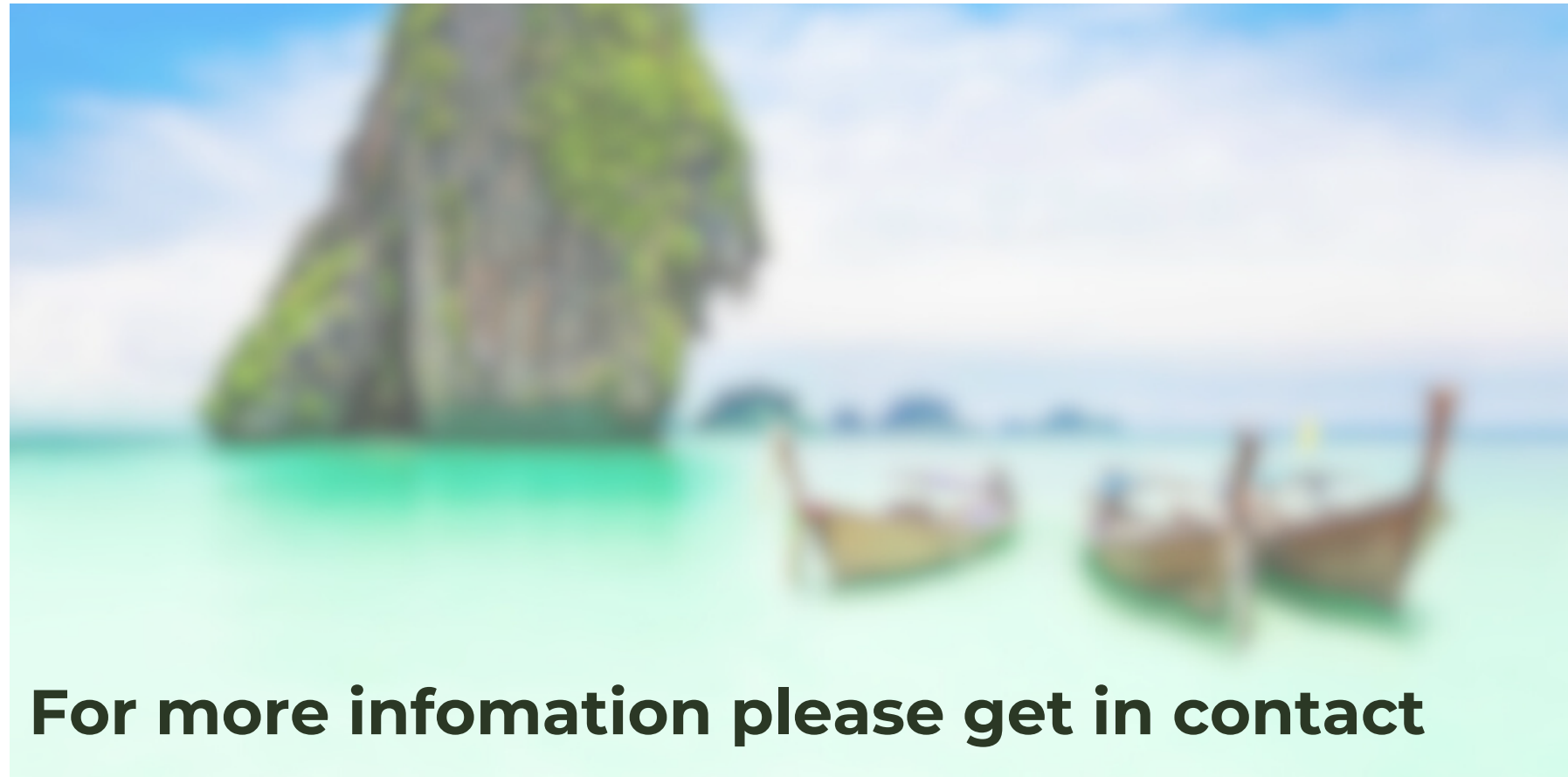


Property/ Imagine's
taken off
current market



Demie Charles

Thank You



Remie Charles Real Estate Int
enquiries@remiecharles.com
+44 788 455 9097

Remie Charles



พระมหากษัตริย์



Certificate of Recognition
Is Presented To

**Remie Charles Real Estate
International**

Has incorporated the way of Thai
Culture through his respect for the Art
into his International Estate Business

**Honorary Advisor
For Thai Culture Forum UK**



Kriangsak Jirisanbhand
President of Thai Culture Forum UK

Vice President of AITMA & IMTF

