



CHELSEA WHARF

RESIDENCES

FLOORPLANS

Apartment One

Ground Floor

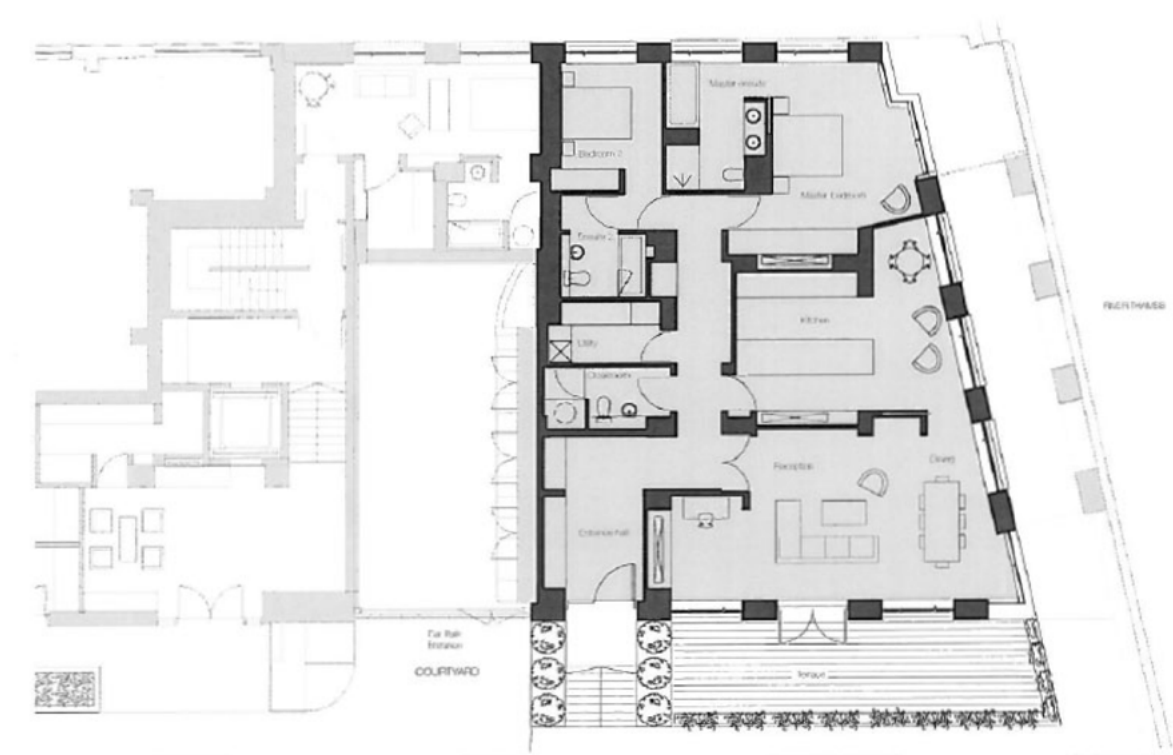
Approximate Gross Internal Area

1,938 sq ft / 180 sq m

Approximate Gross External Area

226 sq ft / 21 sq m

Strutt & Parker give no guarantee with regard to the accuracy of the floorplan drawing and areas stated.



Principal Bedroom

16'9" x 13'11"

5.1m x 4.24m

Bedroom 2

12'5" x 9'5"

3.78m x 2.88m

Kitchen

21'3" x 12'10"

6.49m x 3.92m

Guests' Cloakroom

7'7" x 5'8"

2.32m x 1.73m

Entrance Hall

15'3" x 9'4"

4.64m x 2.85m

Principal En Suite

13'0" x 9'4"

3.95m x 2.84m

En Suite 2

9'8" x 7'11"

2.94m x 2.42m

Reception/Dining Room

33'2" x 17'1"

10.11m x 5.2m

Utility Room

11'6" x 5'8"

3.5m x 1.73m

Terrace

35'3" x 8'11"

10.75m x 2.71m

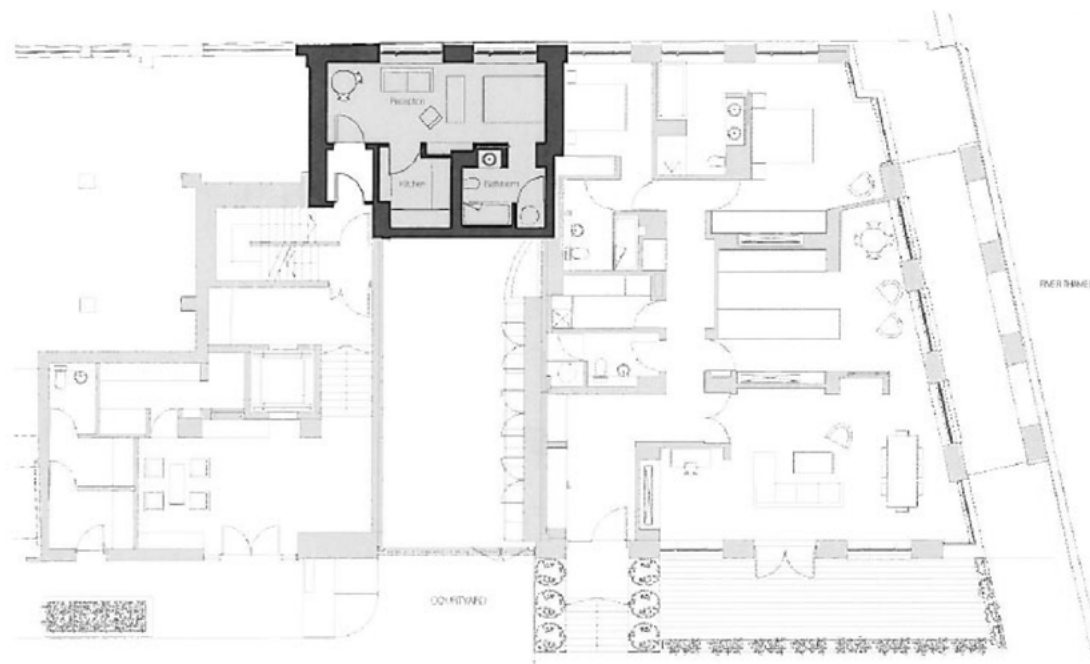
Apartment Two

Ground Floor

Approximate Gross Internal Area

366 sq ft / 34 sq m.

Strutt & Parker give no guarantee with regard to the accuracy of the floorplan drawing and areas stated.



Bathroom

8'9" x 8'1"

2.67m x 2.45m

Reception Room

23'1" x 8'7"

7.03m x 2.61m

Kitchen

9'0" x 7'7"

2.75m x 2.31m

Apartment Three

First Floor

Approximate Gross Internal Area

1,625 sq ft / 151 sq m

Approximate Gross External Area

75 sq ft / 7 sq m

Strutt & Parker give no guarantee with regard to the accuracy of the floorplan drawing and areas stated.



Principal Bedroom

17'9" x 15'1"
5.42 x 4.59m

Bedroom 2

13'3" x 10'10"
4.03m x 3.29m

Reception/Dining Room

21'2" x 21'0"
6.45m x 6.41m

Guests' Cloakroom

5'11" x 4'3"
1.81m x 1.31m

Entrance Hall

44'11" x 4'6"
13.71m x 1.37m

Principal En Suite

11'3" x 9'9"
3.44m x 2.98m

En Suite 2

8'9" x 6'3"
2.67m x 1.9m

Kitchen

15'8" x 10'0"
4.78m x 3.05m

Utility Room

6'10" x 5'11"
2.09m x 1.81m

Terrace

9'1" x 8'2"
2.76m x 2.49m

Apartment Four

First Floor

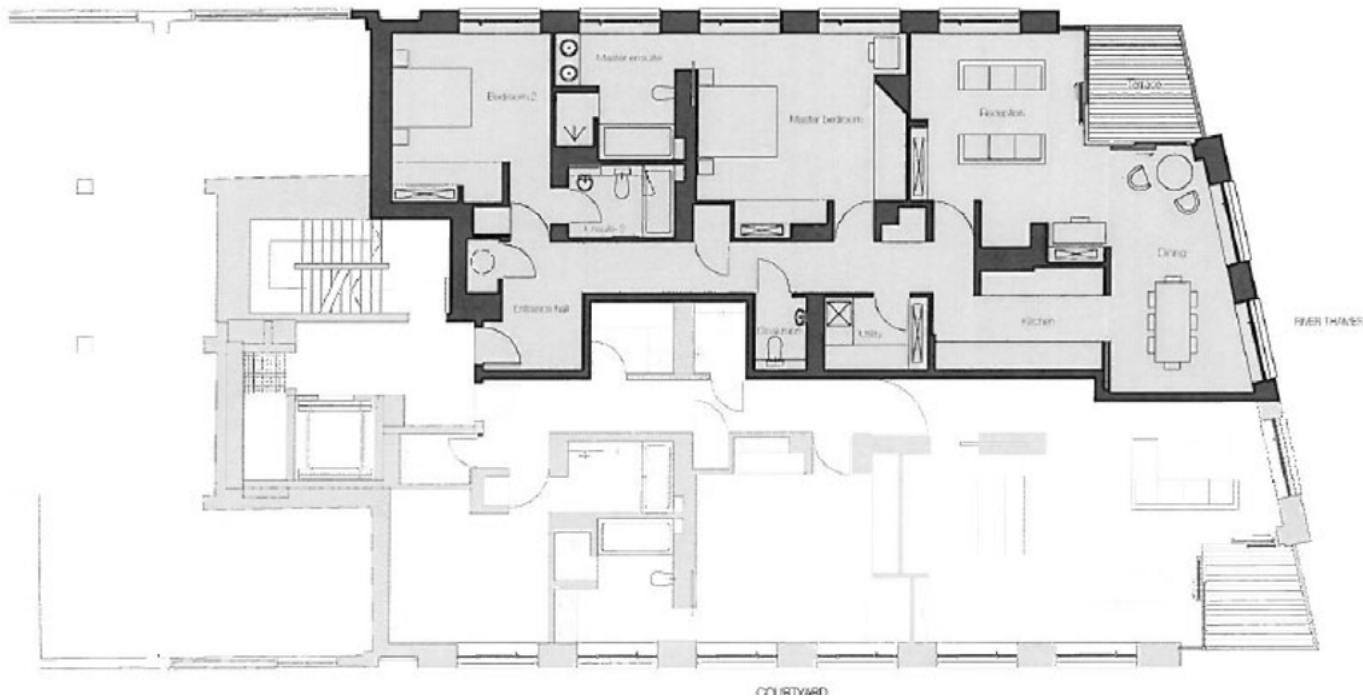
Approximate Gross Internal Area

1,690 sq ft / 157 sq m

Approximate Gross External Area

65 sq ft / 6 sq m

Strutt & Parker give no guarantee with regard to the accuracy of the floorplan drawing and areas stated.



Principal Bedroom

17'4"x 14'10"
5.27m x 4.53m

Principal En Suite

11'5" x 9'10"
3.49m x 3.01m

Bedroom 2

13'2"x 10'8"
4m x 3.26m

En Suite 2

8'9"x 5'11"
2.67m x 1.8m

Reception Room

18'0"x 14'6"
5.49m x 4.41m

Kitchen

13'11"x 8'5"
4.24m x 2.55m

Guests' Cloakroom

6'1"x 4'2"
1.85m x 1.27m

Utility Room

7'0"x 6'1"
2.13m x 1.85m

Dining Area

12'5"x 12'1"
3.79m x 3.68m

Entrance Hall

39'1" x 4'1"
11.91m x 1.25m

Terrace

9'7"x 9'4"
2.91m x 2.85m

Apartment Five

Second Floor

Approximate Gross Internal Area
1,625 sq ft / 151 sq m.
Approximate Gross External Area
75 sq ft / 7 sq m

Strutt & Parker give no guarantee with regard to the accuracy of the floorplan drawing and areas stated.



Principal Bedroom
17'9" x 15'1"
5.42 x 4.59m

Bedroom 2
13'3" x 10'10"
4.03m x 3.29m

Reception / Dining Room
21'2" x 21'0"
6.45m x 6.41m

Guests' Cloakroom
5'11" x 4'3"
1.81m x 1.31m

Entrance Hall
44'11" x 4'6"
13.71m x 1.37m

Principal En Suite
11'3" x 9'9"
3.44m x 2.98m

En Suite 2
8'9" x 6'3"
2.67m x 1.9m

Kitchen
15'8" x 10'0"
4.78m x 3.05m

Utility Room
6'10" x 5'11"
2.09m x 1.81m

Terrace
9'1" x 8'2"
2.76m x 2.49m

Apartment Six

Second Floor

Approximate Gross Internal Area

1,690 sq ft / 157 sq m

Approximate Gross External Area

65 sq ft / 6 sq m

Strutt & Parker give no guarantee with regard to the accuracy of the floorplan drawing and areas stated.



Principal Bedroom

17'4" x 14'10"
5.27m x 4.53m

Principal En Suite

11'5" x 9'10"
3.49m x 3.01m

Bedroom 2

13'2" x 10'8"
4m x 3.26m

En Suite 2

8'9" x 5'11"
2.67m x 1.8m

Reception Room

18'0" x 14'6"
5.49m x 4.41m

Kitchen

13'11" x 8'5"
4.24m x 2.55m

Guests' Cloakroom

6'1" x 4'2"
1.85m x 1.27m

Utility Room

7'0" x 6'1"
2.13m x 1.85m

Dining Area

12'5" x 12'1"
3.79m x 3.68m

Entrance Hall

39'1" x 4'1"
11.91m x 1.25m

Terrace

9'7" x 9'4"
2.91m x 2.85m

Apartment Seven

Third Floor

Approximate Gross Internal Area

1,625 sq ft / 151 sq m

Approximate Gross External Area

75 sq ft / 7 sq m

Strutt & Parker give no guarantee with regard to the accuracy of the floorplan drawing and areas stated.



Principal Bedroom

17'9" x 15'1"

5.42 x 4.59m

Bedroom 2

13'3" x 10'10"

4.03m x 3.29m

Reception/Dining Room

21'2" x 21'0"

6.45m x 6.41m

Guests' Cloakroom

5'11" x 4'3"

1.81m x 1.31m

Entrance Hall

44'11" x 4'6"

13.71m x 1.37m

Principal En Suite

11'3" x 9'9"

3.44m x 2.98m

En Suite 2

8'9" x 6'3"

2.6 m x 1.9m

Kitchen

15'8" x 10'0"

4.78m x 3.05m

Utility Room

11'6" x 5'8"

3.5m x 1.73m

Terrace

9'1" x 8'2"

2.76m x 2.49m

Apartment Eight

Third Floor

Approximate Gross Internal Area
1,690 sq ft / 157 sq m
Approximate Gross External Area
65 sq ft / 6sq m

Strutt & Parker give no guarantee with regard to the accuracy of the floorplan drawing and areas stated.



Principal Bedroom
17'4" x 14'10"
5.27m x 4.53m

Principal En Suite
11'5" x 9'10"
3.49m x 3.01m

Bedroom 2
13'2" x 10'8"
4m x 3.26m

En Suite 2
8'9" x 5'11"
2.67m x 1.8m

Reception Room
18'0" x 14'6"
5.49m x 4.41m

Kitchen
13'11" x 8'5"
4.24m x 2.55m

Guests' Cloakroom
6'1" x 4'2"
1.85m x 1.27m

Utility Room
7'0" x 6'1"
2.13m x 1.85m

Dining Area
12'5" x 12'1"
3.79m x 3.68m

Entrance Hall
39'1" x 4'1"
11.91m x 1.25m

Terrace
9'7" x 9'4"
2.91m x 2.85m

Apartment Nine

Fourth Floor

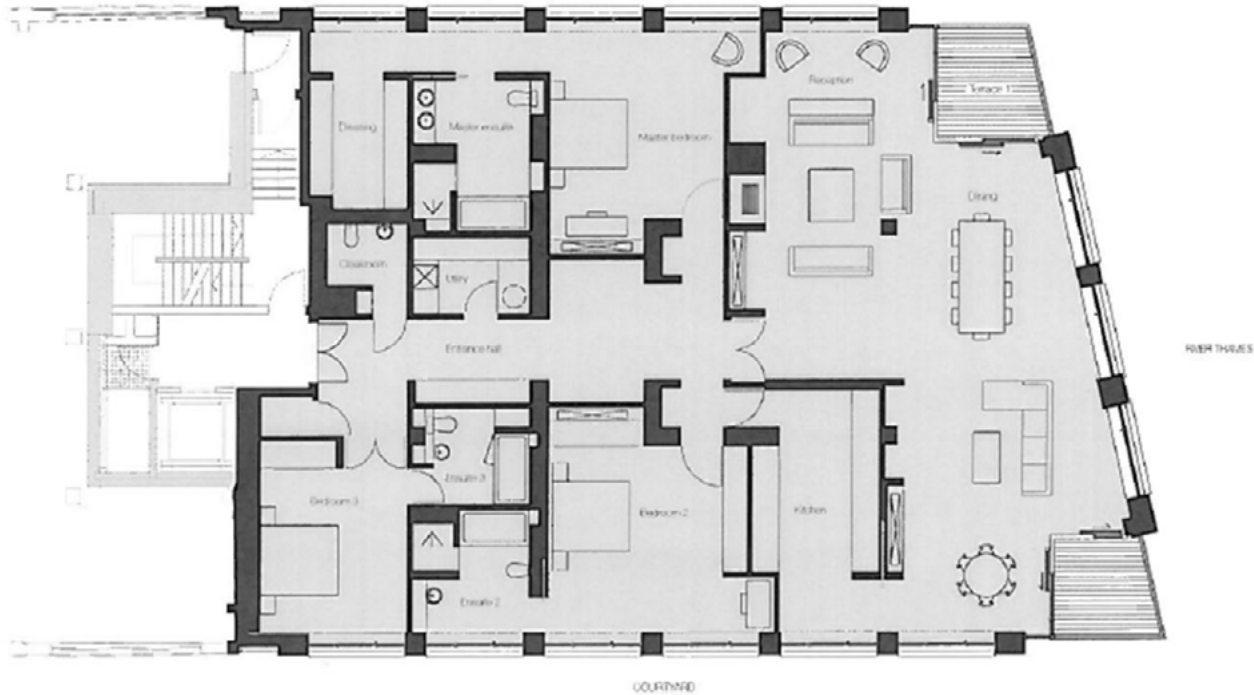
Approximate Gross Internal Area

3,348 sq ft / 311 sq m

Approximate Gross External Area

140 sq ft / 13 sq m

Strutt & Parker give no guarantee with regard to the accuracy of the floorplan drawing and areas stated.



Principal Bedroom

18'6" x 14'9"
5.63m x 4.5m

Principal En Suite

12'9" x 9'4"
3.89m x 2.85m

Principal Dressing Room

15'11" x 8'4"
4.86m x 2.53m

Bedroom 2

19'1" x 16'8"
5.82m x 5.07m

En Suite 2

11'4" x 9'10"
3.45m x 3.01m

Bedroom 3

17'7" x 12'5"
5.35m x 3.78m

En Suite 3

8'9" x 8'1"
2.68m x 2.45m

Reception/Dining Room

51'11" x 32'1"
15.83m x 9.77m

Kitchen

21'4" x 10'9"
6.51m x 3.26m

Guests' Cloakroom

8'1" x 6'10" "
2.46m x 2.08m

Utility Room

9'11" x 6'6"
3.01m x 1.99m

Entrance Hall

34'3" x 4'11"
10.44m x 1.5m

Terrace 1

9'7" x 9'4"
2.92m x 2.85m

Terrace 2

8'9" x 8'2"
2.66m x 2.49m

Apartment Ten

Fifth Floor

Approximate Gross Internal Area

3,348 sq ft / 311 sq m

Approximate Gross External Area

140 sq ft / 13 sq m

Strutt & Parker give no guarantee with regard to the accuracy of the floorplan drawing and areas stated.



Principal Bedroom

18'6" x 14'9"

5.63m x 4.5m

Principal En Suite

12'9" x 9'4"

3.89m x 2.85m

Principal Dressing Room

15'11" x 8'4"

4.86m x 2.53m

Bedroom 2

19'1" x 16'8"

5.82m x 5.07m

En Suite 2

11'4" x 9'10"

3.45m x 3.01m

Bedroom 3

17'7" x 12'5"

5.35m x 3.78m

En Suite 3

8'9" x 8'1"

2.68m x 2.45m

Reception/Dining Room

51'11" x 32'1"

15.83m x 9.77m

Kitchen

21'4" x 10'9"

6.51m x 3.26m

Entrance Hall

34'3" x 4'11"

10.44m x 1.5m

Guests' Cloakroom

8'1" x 6'10"

2.46m x 2.08m

Utility Room

9'11" x 6'6"

3.01m x 1.99m

Terrace 1

9'7" x 9'4"

2.92m x 2.85m

Terrace 2

8'9" x 8'2"

2.66m x 2.49m

Apartment Eleven

Sixth Floor

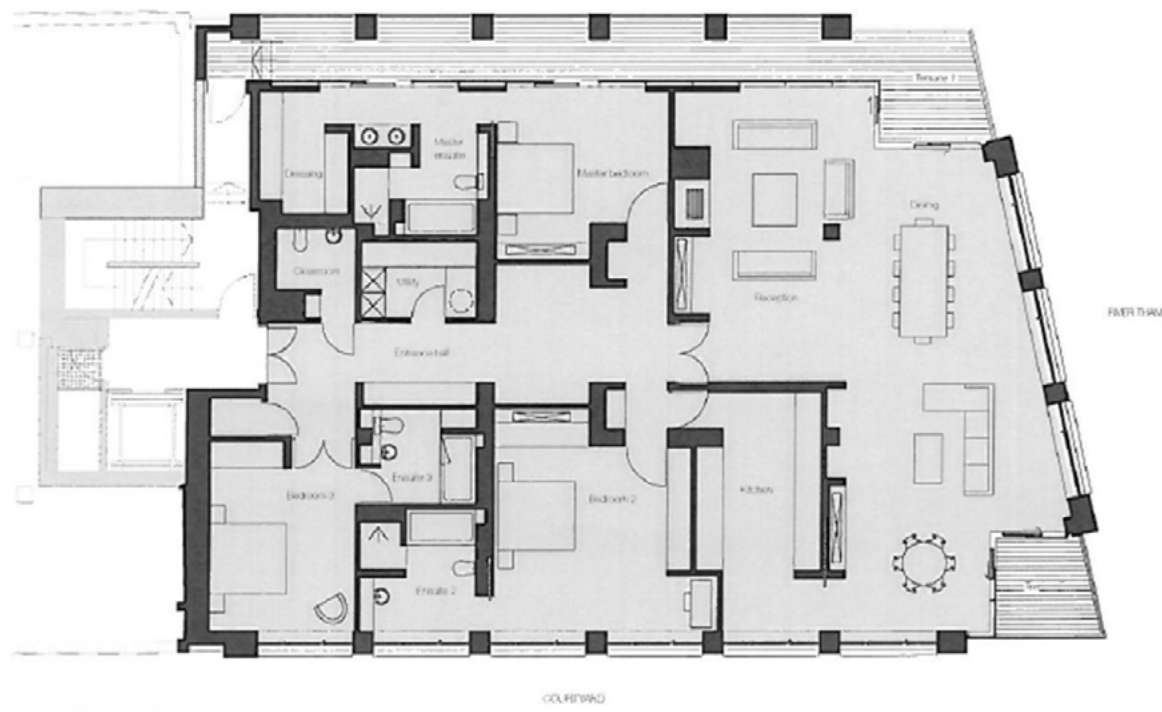
Approximate Gross Internal Area

3,089 sq ft / 287 sq m

Approximate Gross External Area

388 sq ft / 36 sq m

Strutt & Parker give no guarantee with regard to the accuracy of the floorplan drawing and areas stated.



Principal Bedroom

14'9" x 13'11"

4.5m x 4.24m

Principal En Suite

11'5" x 9'4"

3.49m x 2.84m

Principal Dressing Room

10'4" x 7'8"

3.16m x 2.33m

Bedroom 2

16'6" x 14'6"

5.04m x 4.41m

En Suite 2

11'6" x 11'4"

3.5m x 3.45m

Bedroom 3

14'9" x 12'5"

4.5m x 3.78m

En Suite 3

8'10" x 8'1"

2.69m x 2.45m

Reception Room

4'5" x 24'6"

14.44m x 7.46m

Kitchen

15'4" x 10'9"

4.68m x 3.26m

Entrance Hall

34'3" x 5'1"

10.44m x 1.54m

Guests' Cloakroom

8'1" x 6'10"

2.46m x 2.08m

Utility Room

9'11" x 6'6"

3.01m x 1.99m

Terrace 1

61'1" x 5'6"

18.6m x 1.6

Terrace 2

9'1" x 9'0"

2.76m x 2.76m

Apartment Twelve

Seventh Floor

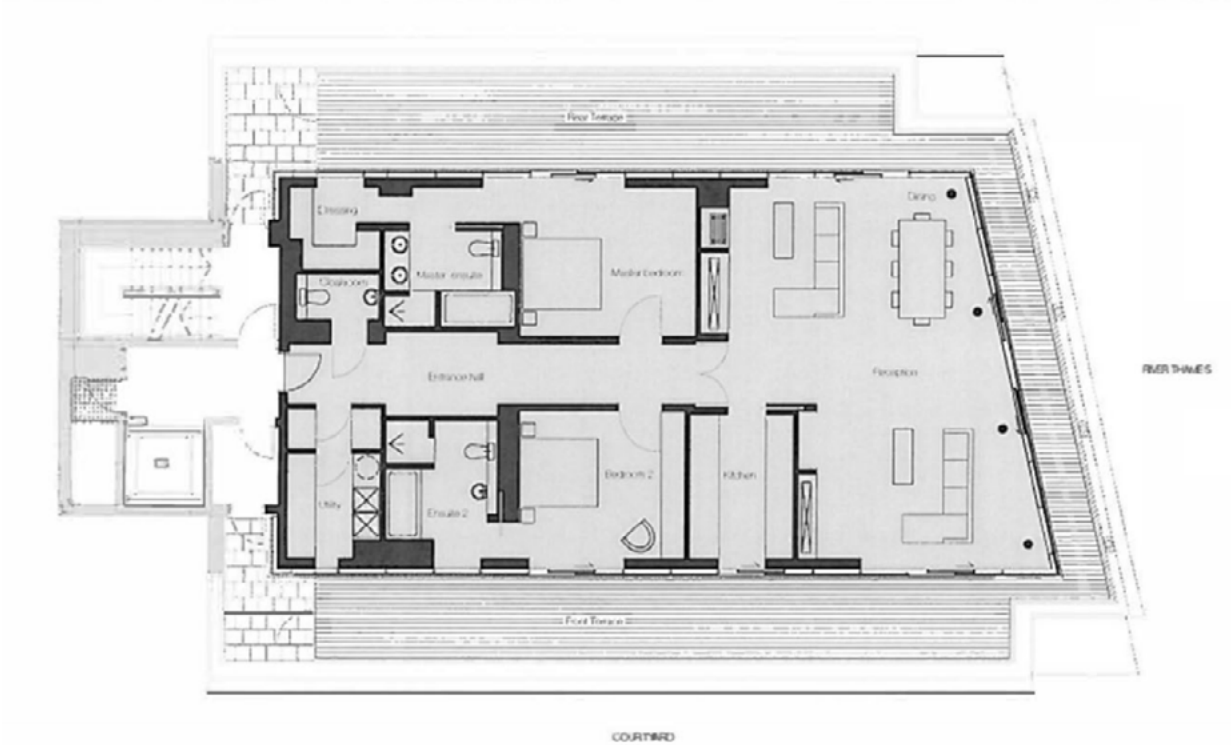
Approximate Gross Internal Area

1,927 sq ft / 179 sq m

Approximate Gross External Area

1,066 sq ft / 99 sq m

Strutt & Parker give no guarantee with regard to the accuracy of the floorplan drawing and areas stated.



Principal Bedroom

14'9" x 13'4"
4.48m x 4.06m

Principal En Suite

9'10" x 7'11"
2.99m x 2.42m

Principal Dressing Room

7'11" x 7'6"
2.42m x 2.3m

Bedroom 2

13'3" x 11'10"
4.04m x 3.61m

En Suite 2

11'7" x 9'4"
3.53m x 2.85m

Reception/Dining Room

32'1" x 21'1"
10.01m x 6.43m

Kitchen

13'0" x 8'8"
3.96m x 2.63m

Guests' Cloakroom

7'6" x 5'5"
2.3m x 1.6m

Utility Room

13'6" x 7'9"
4.12m x 2.37m

Front Terrace

61'2" x 7'6"
18.65m x 2.29m

Entrance Hall

34'3" x 6'11"
10.44m x 2.1m

Rear Terrace

61'2" x 8'8"
18.65m x 2.65m

INTERNATIONAL & PRIVATE CLIENT DEPARTMENT

CONTACT US

reukprivatewealth@realestate.bnpparibas

+44 (0) 20 7052 9664



**BNP PARIBAS
REAL ESTATE**



BNP PARIBAS GROUP 

THE
BROCHURE

IMPORTANT NOTICE: Strutt & Parker gives notice that: 1. These particulars do not constitute an offer or contract or part thereof. 2. All descriptions, photographs and plans are for guidance only and should not be relied upon as statements or representations of fact. All measurements are approximate and not necessarily to scale. Any prospective purchaser must satisfy themselves of the correctness of the information within the particulars by inspection or otherwise. 3. Strutt & Parker does not have any authority to give any representations or warranties whatsoever in relation to this property (including but not limited to planning/building regulations), nor can it enter into any contract on behalf of the Vendor. 4. Strutt & Parker does not accept responsibility for any expenses incurred by prospective purchasers in inspecting properties which have been sold, let or withdrawn. 5. We are able to refer you to SPF Private Clients Limited ("SPF") for mortgage broking services, and to Alexander James Interiors ("AJI"), an interior design service. Should you decide to use the services of SPF, we will receive a referral fee from them of 25% of the aggregate of the fee paid to them by you for the arrangement of a mortgage and any fee received by them from the product provider. Should you decide to use the services of AJI, we will receive a referral fee of 10% of the net income received by AJI for the services they provide to you. 6. If there is anything of particular importance to you, please contact this office and Strutt & Parker will try to have the information checked for you. **Particulars prepared October 2023.** Strutt & Parker is a trading style of BNP Paribas Real Estate Advisory & Property Management UK Limited. 19/10/23 S&P-230919-FP-01GG

