

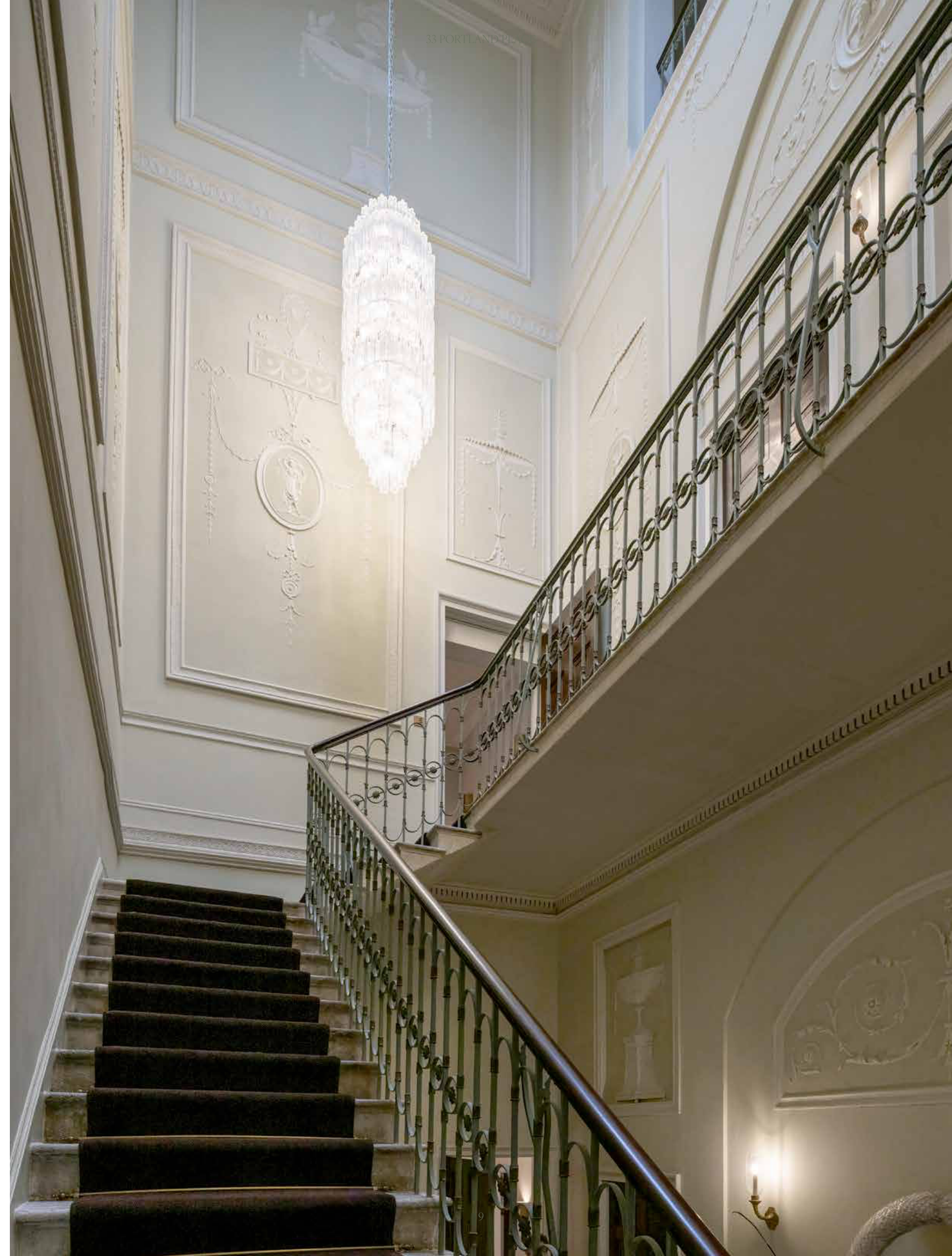
“

FEW PROJECTS
PRESENT SO UNIQUE
A CHALLENGE IN
ACCOMMODATING
SUCH CONTEMPORARY
LUXURY ALONGSIDE
SUCH RICH HISTORY.

Our approach blended meticulous restoration with creative reimagining to achieve a balance between heritage and development. In particular, the hierarchy of the spaces and the flow between them were carefully considered to ensure the smooth operation of the house. It has been our pleasure to restore this grand Adam townhouse to its former glory.

MSMR Architects

”







TIMELESS ELEGANCE

Creating a classic, timeless and assured look that goes beyond dates and trends, and can take the building and into another century of living, providing a home for memories and stories, and spaces for everyone to live in - for intimate family moments, and for grand entertaining gestures.







REFINED DETAILING

Balancing the exquisite detailing of the interior architecture with carefully selected pieces, materials, forms and texture. The design and detailing of specially designed fitted joinery, selected marbles and stones, hand painted wallpapers, artisanal and crafted feature chandeliers, furniture and fabrics all come together to create harmonious spaces.













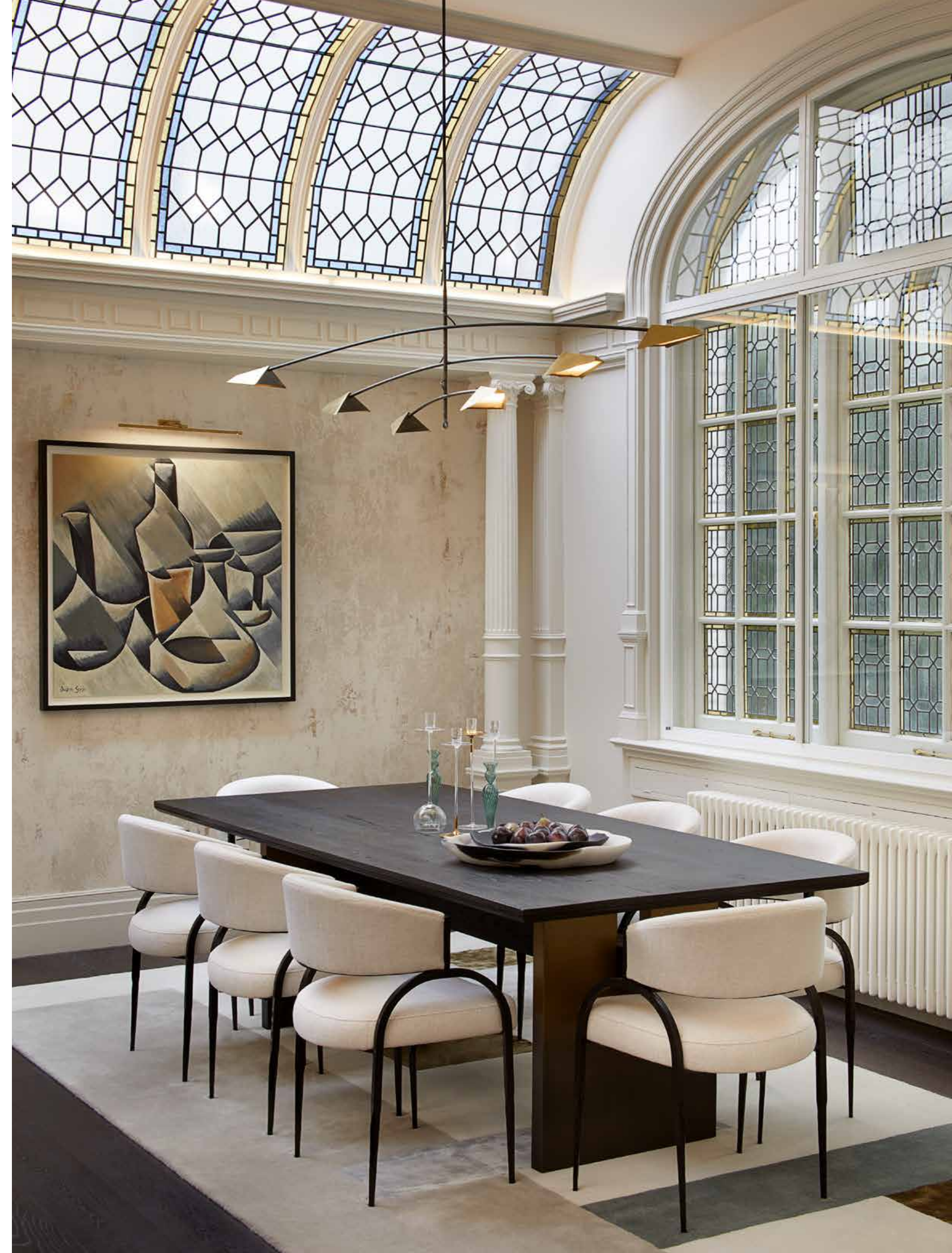






CONTEMPORARY HERITAGE

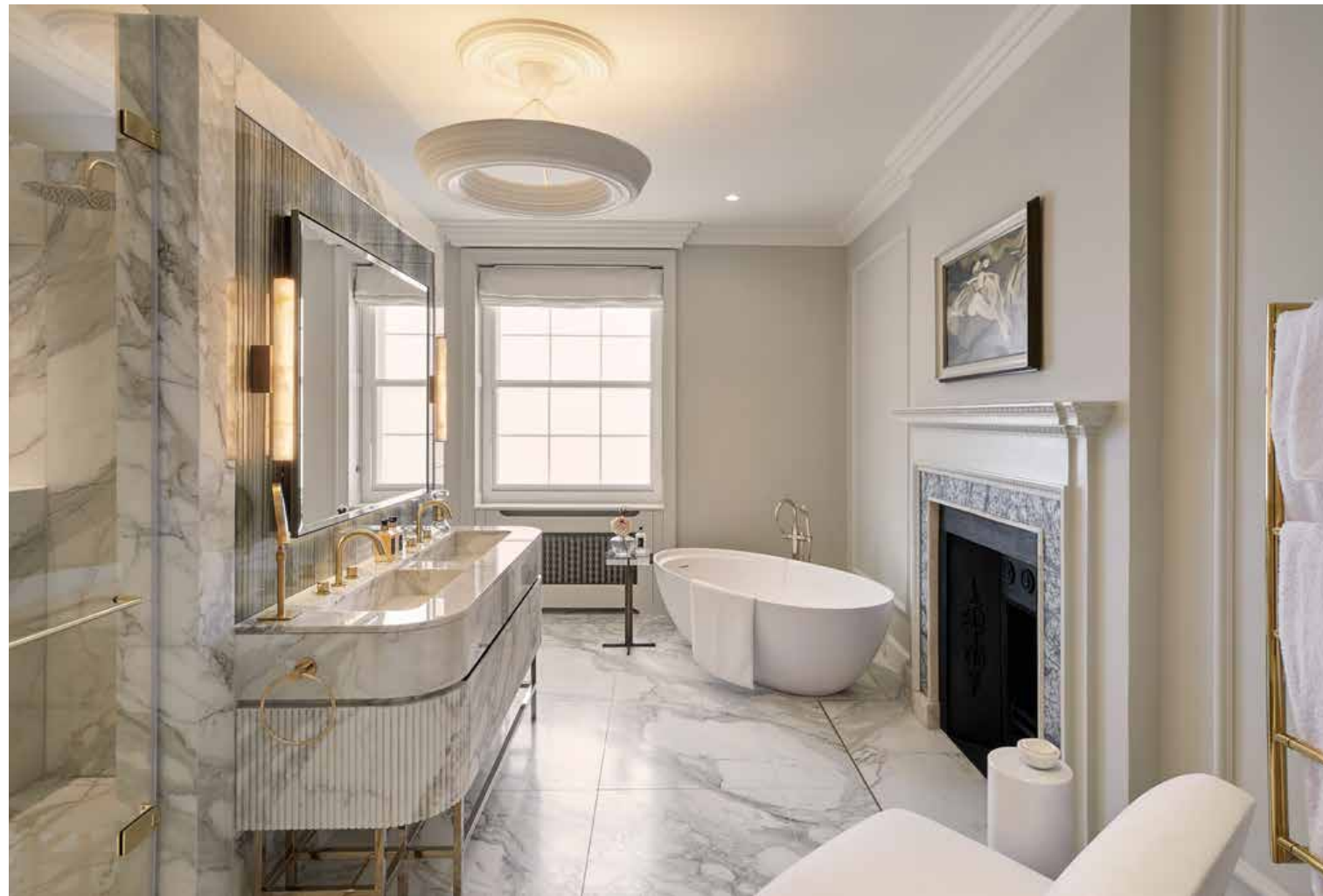
Paying tribute to the heritage of the building and its Grade II listed Adam interiors, and the careful and meticulous restoration of the remarkable ceilings and friezes and of one the most opulently decorated entrance halls and staircase on the street. This is done by the curation and juxtaposition of the historical with the contemporary; the highly decorative with the restrained; and placing sculptural forms next to the light and graceful Adam detailing. Allowing the space for the Interior Architecture to sing.*

























LOCATION

Located on an unusually wide boulevard, 33 Portland Place offers a grandeur and spaciousness rare in the city of London.

In the heart of it all, the residence boasts the best of both worlds, with the verdant expanse of Regent's Park and the world-class dining and unparalleled shopping of the West End just a stone's throw away. Also within a short walk is the sought-after Marylebone High Street, famed for its boutique stores, artisanal cafés, and timeless charm. This coveted address allows you to enjoy and be a part of the very best that London has to offer.



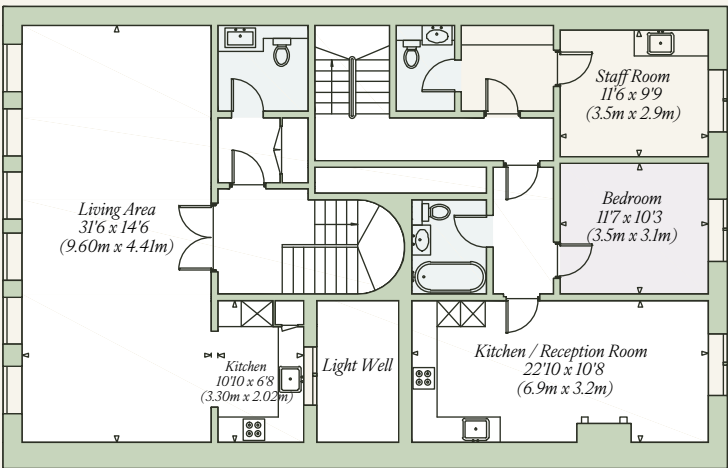


FLOOR PLANS

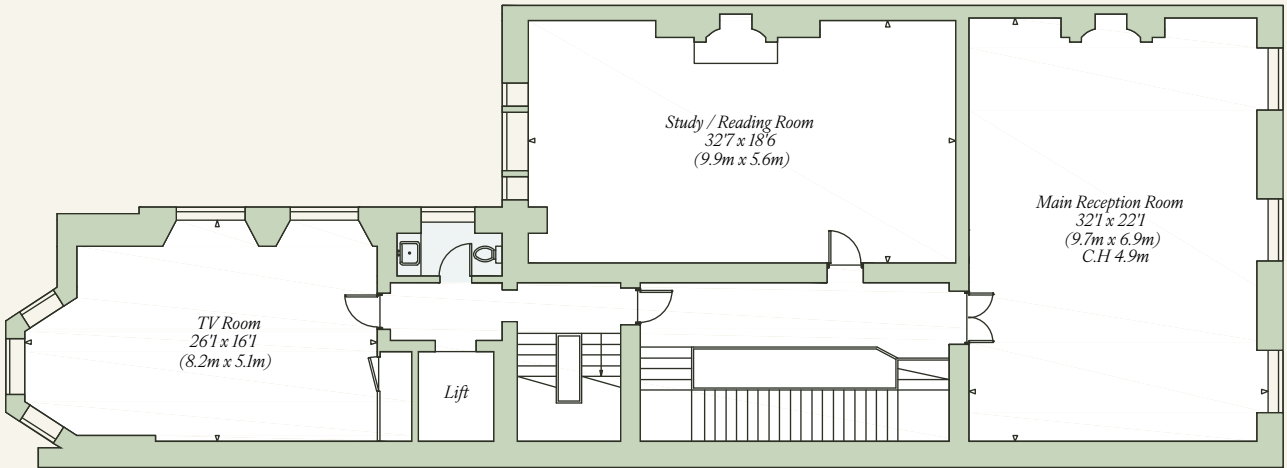
The property's well appointed interior contains 20,987 sq ft (1,949.8 sq m) of internal floor area set across six storeys and incorporates a mews house to the rear. There is a lift servicing all floors



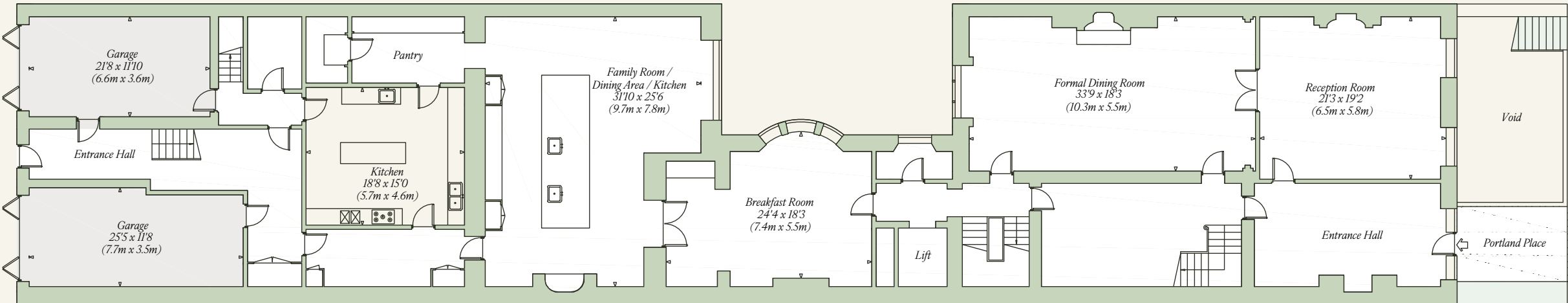
Mews First Floor



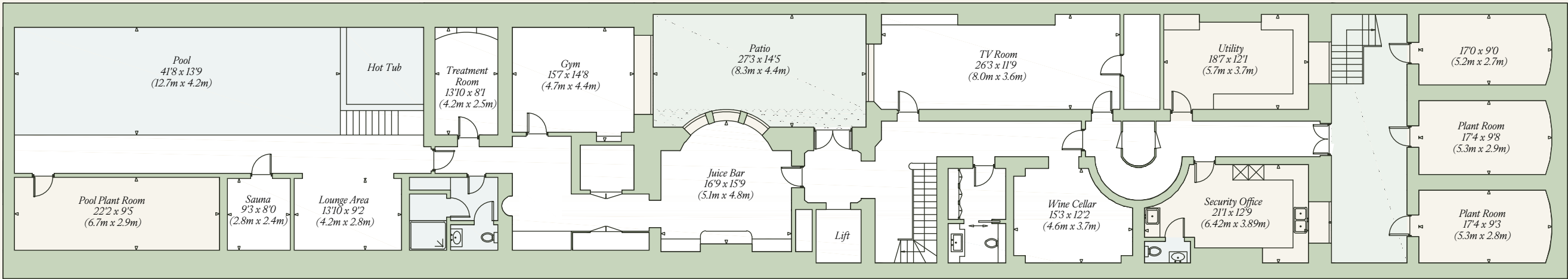
First Floor



Ground Floor



Basement Floor

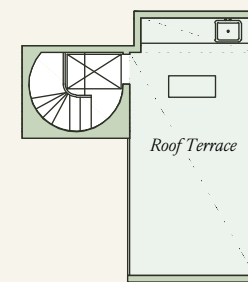


Weymouth Mews

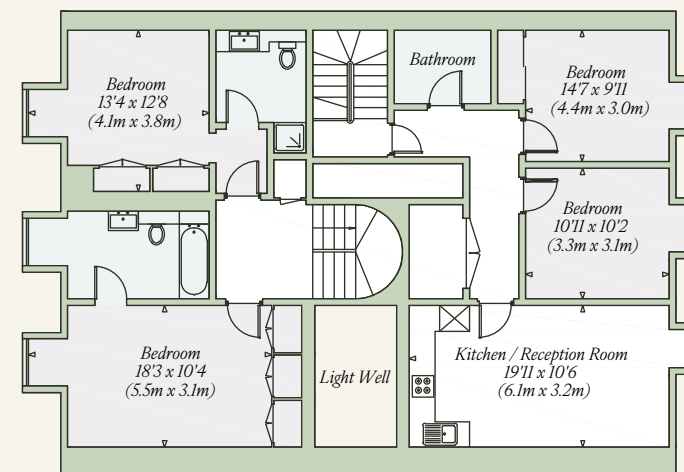
Portland Place



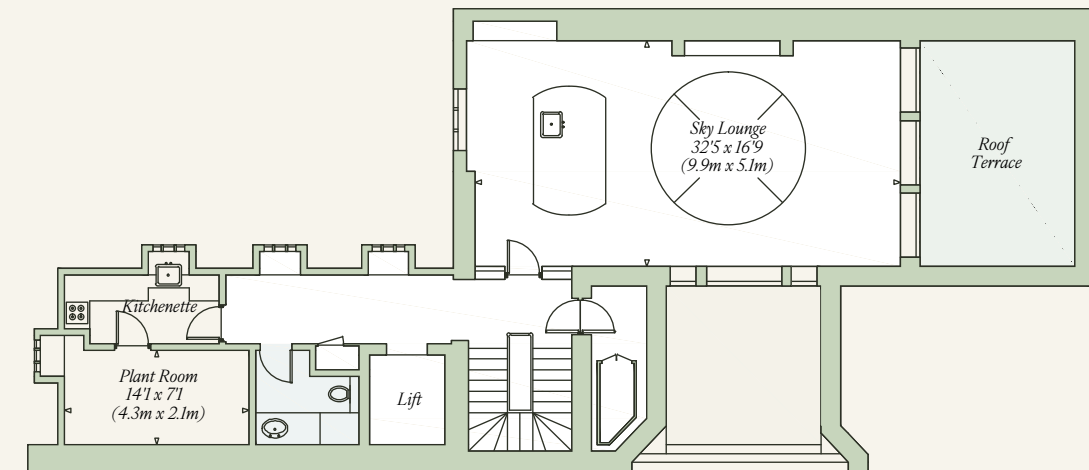
Mews Third Floor



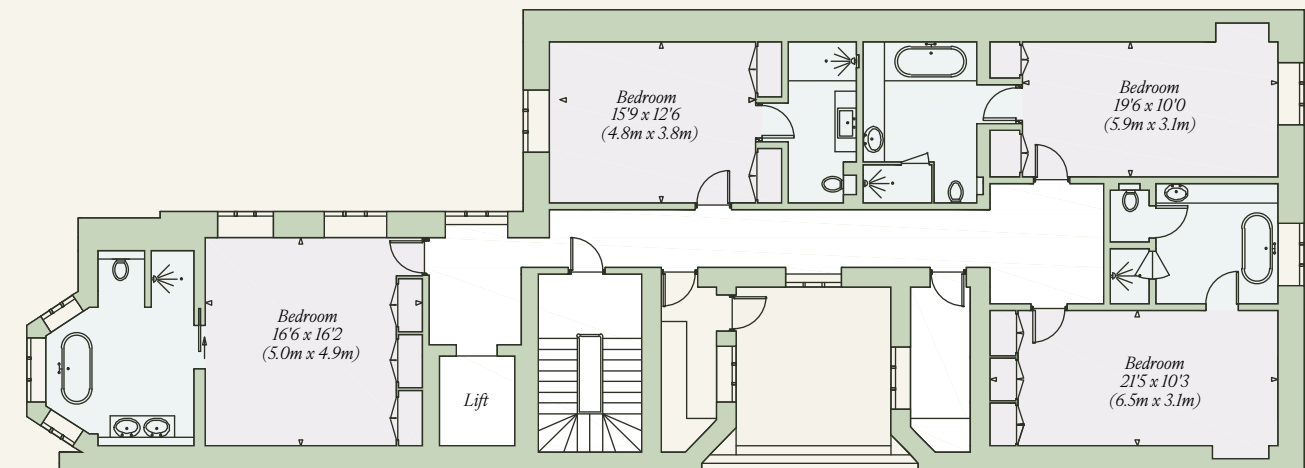
Mews Second Floor



Fourth Floor



Third Floor



Second Floor

