

A distinguished detached freehold mansion on the prestigious Winnington Road in Hampstead Garden Suburb.

Located in the Hampstead Garden Suburb area of north-west London, within the London Borough of Barnet, approximately 5 miles north-west of Central London.

Accommodation:



Spanning three floors, the property features a grand entrance hall, drawing room, family room, TV room, kitchen/breakfast room, morning room, dining room, study, and three guest cloakrooms. The master suite includes a dressing room and en-suite bathroom.

Development Potential:

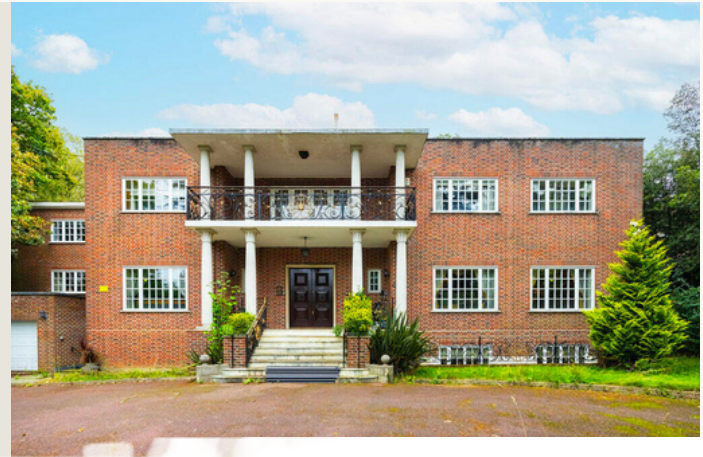
The property has expired planning permission for a new mansion of approximately 20,000 sq ft, presenting an excellent opportunity for redevelopment, subject to



Winnington Road, London, N2

 7  9

- Land area approximately 0.224 hectares (0.554 acres)
- Approx. Gross Internal Area : 1,242 sq M / 13, 370 sq ft,
- 7 en-suite bathrooms attached to the bedrooms
- 3 guest cloakrooms located on the ground floor
- 1 staff shower room
- 1 staff en-suite bathroom



Winnington Road, London, N2

- Land area approximately 0.224 hectares (0.554 acres)
- Approx. Gross Internal Area : 1,242 sq M / 13, 370 sq ft,
- 7 en-suite bathrooms attached to the bedrooms
- 3 guest cloakrooms located on the ground floor
- 1 staff shower room
- 1 staff en-suite bathroom

